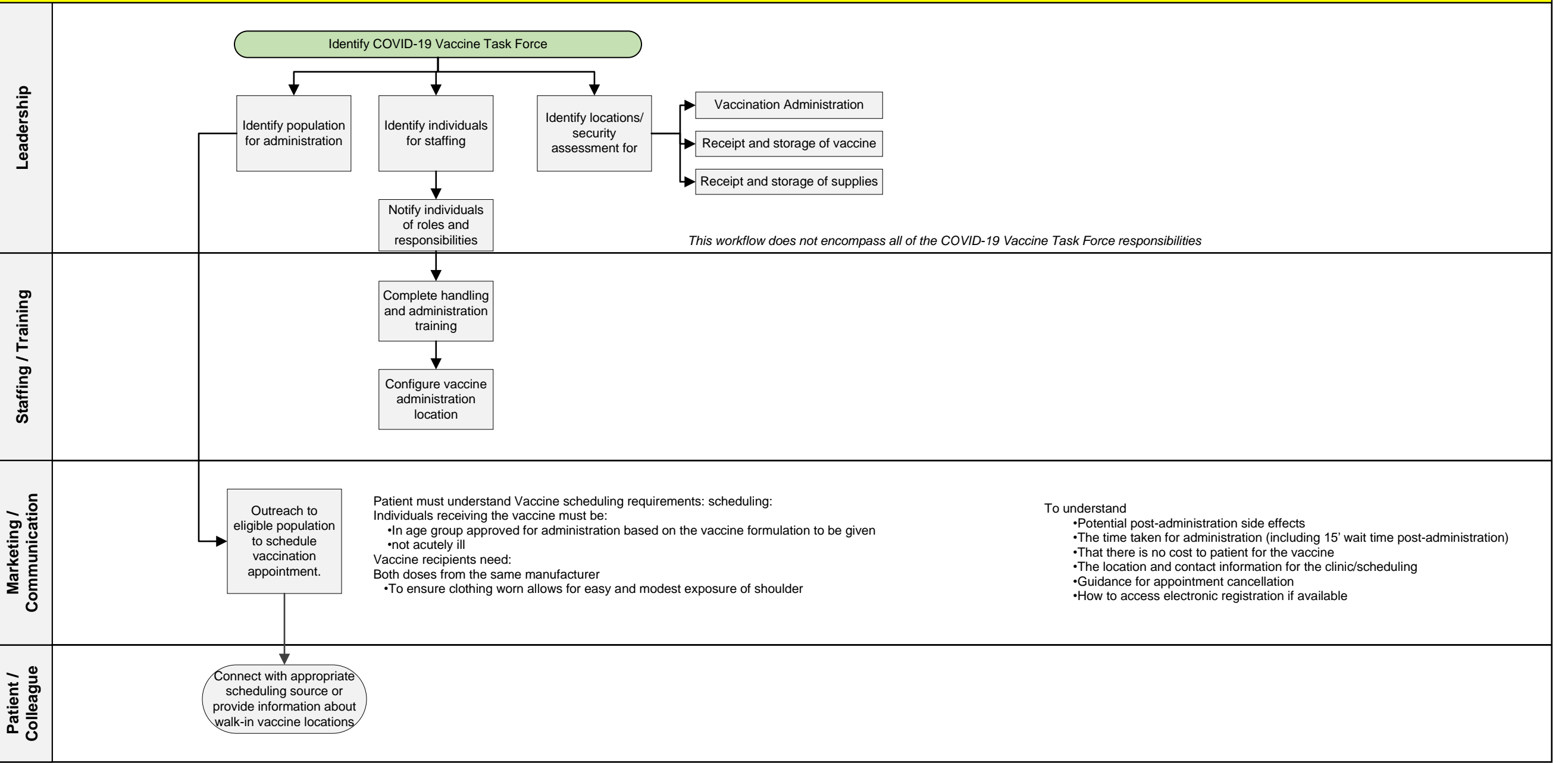
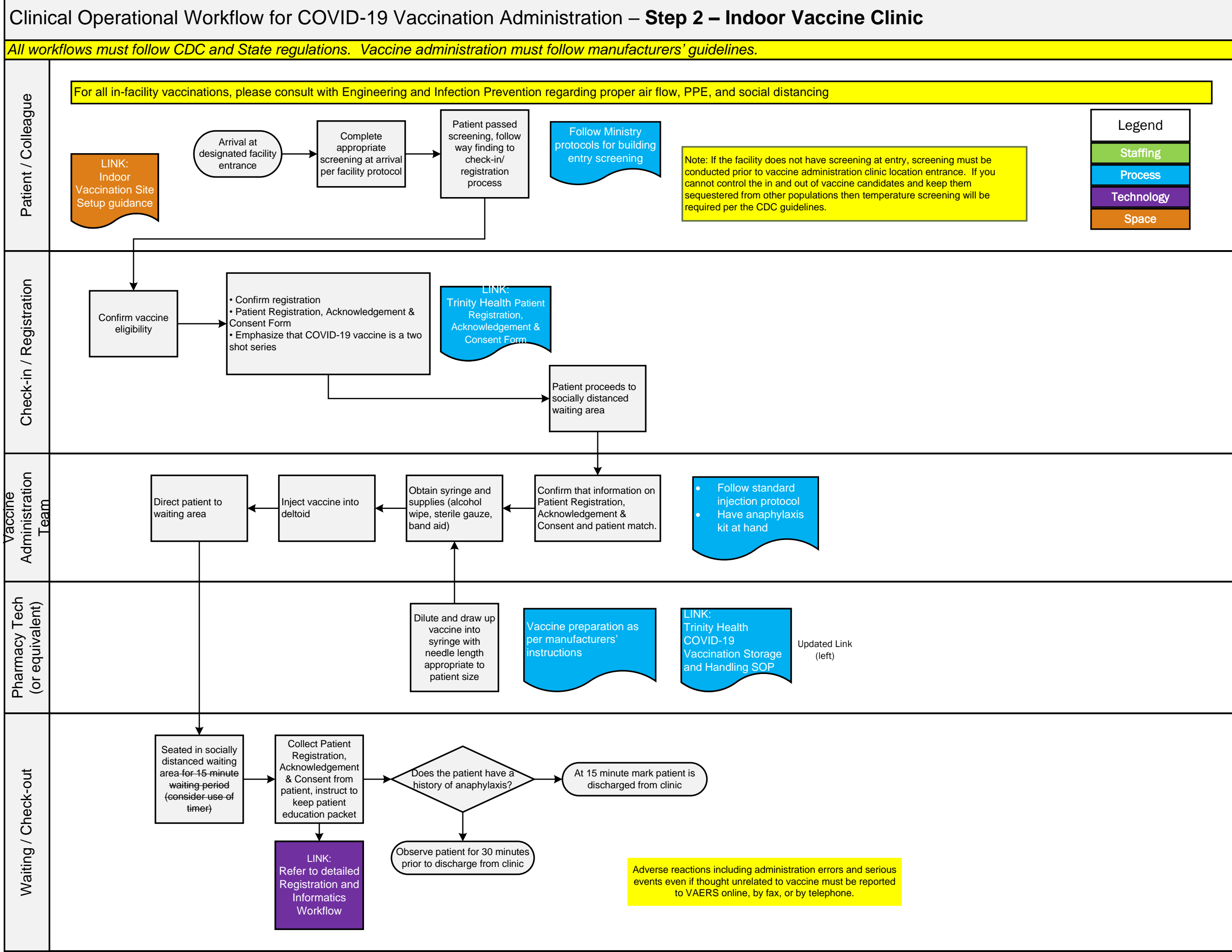


Clinical Operational Workflow for COVID-19 Vaccination Administration – Step 1 - Pre-work

All workflows must follow CDC and State regulations. Vaccine administration must follow manufacturers’ guidelines.





## Clinical Operational Workflow for COVID-19 Vaccination Administration – **Step 2 – Outdoor Vaccine Clinic**

*All workflows must follow CDC and State regulations. Vaccine administration must follow manufacturers' guidelines.*

