

# SQ: Fire Safety, Fire Extinguisher Use



Welcome to **SQ: Fire Safety, Fire Extinguisher Use**.

Select START MODULE to begin.

**Be sure to click on all of the interactive elements in the module in order to advance.**

Introduction

Choosing the Right Extinguisher

PASS Procedure

Fight or Flee?

Module Conclusion

# Introduction

---

You probably have a fire extinguisher in the area where you work. Would you know how to use it if a fire started there?



This module covers:

1

The **types of fire extinguishers** and which one to use for **each type of fire**.

2

The **right way to use a fire extinguisher** by using the acronym PASS.

Let's get started!

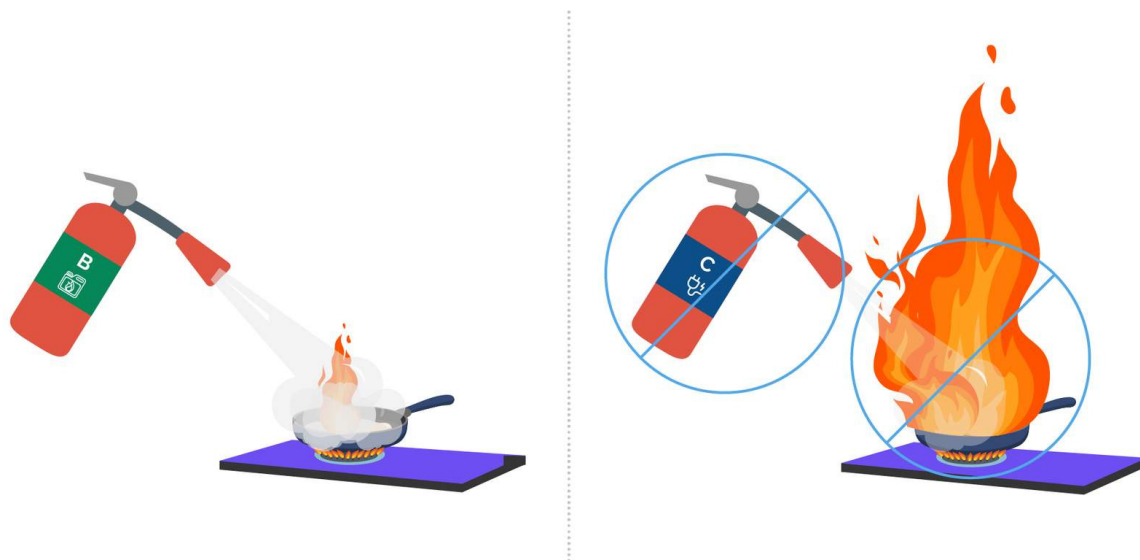


Complete the content above before moving on.

# Choosing the Right Extinguisher

---

As fire safety tools, extinguishers can be used **to control small fires** before they can grow. Using the wrong kind of fire extinguisher or using it the wrong way could cause a fire to spread.



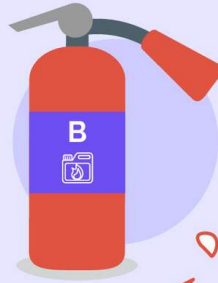
**Each fire extinguisher has a label to show which types of fires it will help put out.**



**Can extinguish fires involving items like:**



- Wood
- Paper
- Fabric
- Rubber
- Most plastics



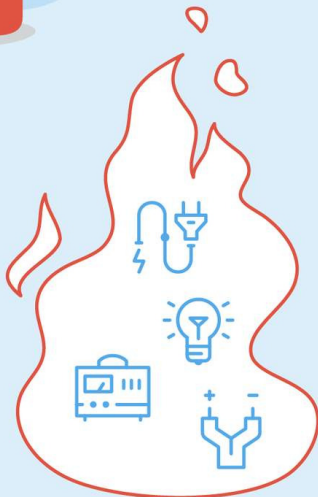
**Can extinguish fires involving flammable liquids and gases like:**



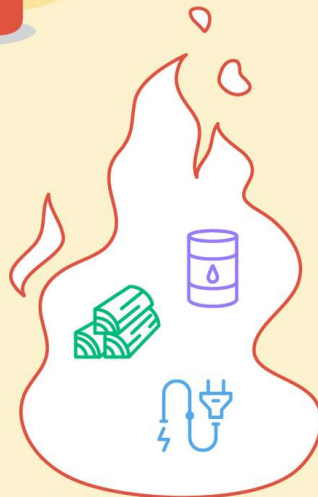
- Gasoline
- Oils
- Paint
- Compressed anesthetic gases



**Can extinguish fires involving electrical equipment**



**Can extinguish any of the fire types described in A, B, and C**



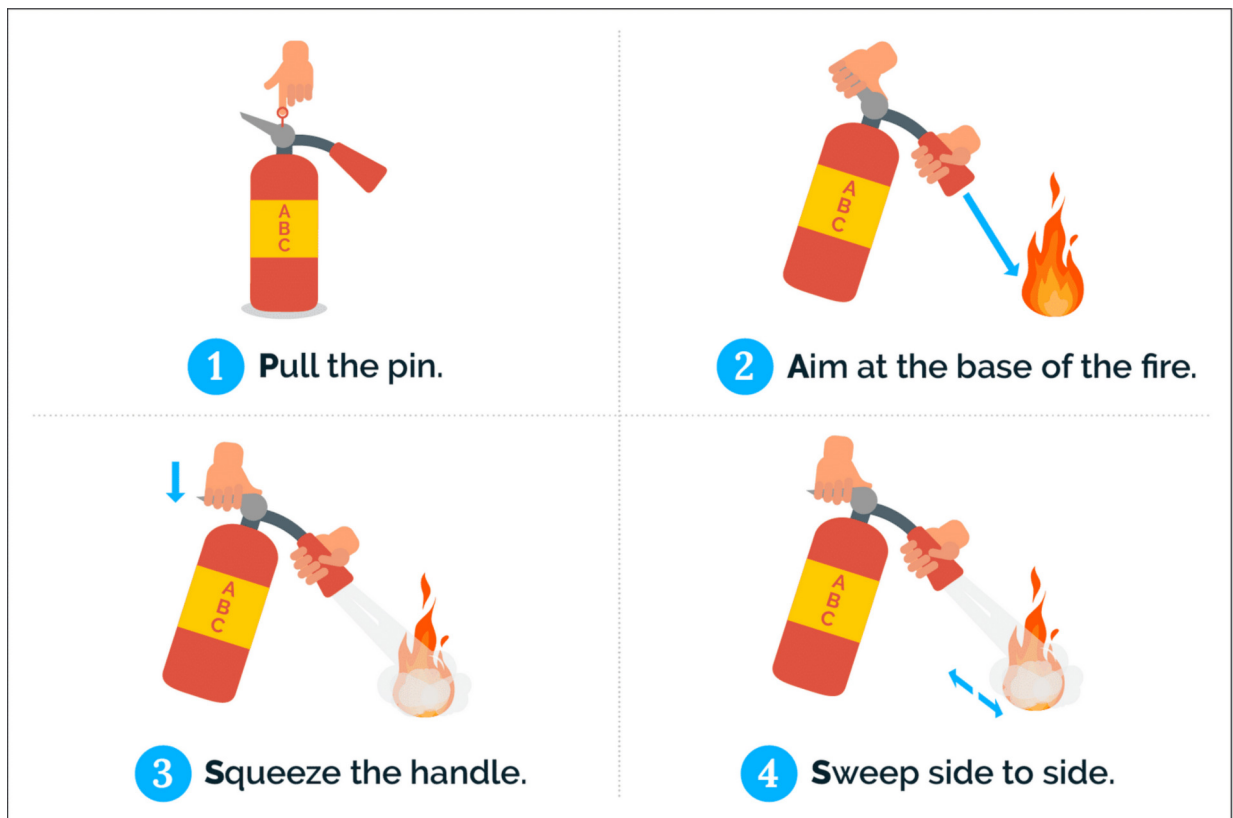


Complete the content above before moving on.

# PASS Procedure

---

Using a fire extinguisher is not as hard as you might think!



There are **four steps** to using a fire extinguisher correctly. They are easy to remember using the acronym **PASS**.

Review the videos below to see how to perform each step.

*Step 1*

**Pull the pin.**



*Step 2*

**Aim the nozzle at the base (bottom) of the fire. You should stand eight to ten feet away from the fire.**







*Step 3*

**Squeeze the handle.**



*Step 4*

**Sweep the nozzle from side to side across the base of the fire.**



**Remember to use the acronym PASS to safely and correctly use a fire extinguisher.**



Complete the content above before moving on.

## Fight or Flee?

---

**Portable fire extinguishers can put out small, contained fires** before the fire department comes. **They cannot fight larger fires that spread quickly.**

Let's look at some examples of when you can safely stay and fight a fire and when you should follow your facility's fire evacuation plan and leave (flee) the area.

Select each card to learn if you should fight the fire or flee to safety.



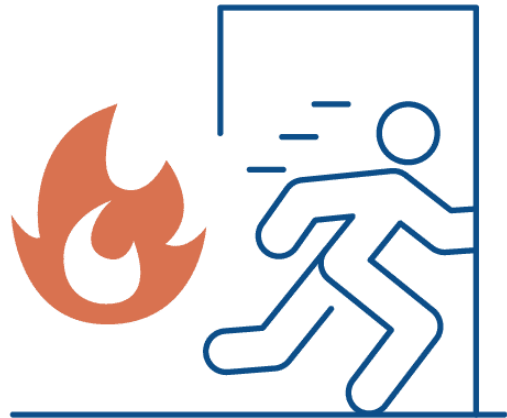
The fire is confined in a small trash bin in your work area.



**Fight**



The fire begins to spread and blocks your way out of the area.



**Flee**

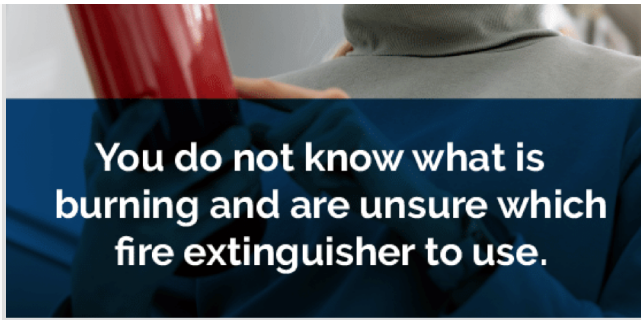



You know how to properly use the extinguisher and know which type of fire it is.



**Fight**





 Complete the content above before moving on.



# Module Conclusion

---

In this module, you reviewed:

In this module, you reviewed:

**Remember, your response during a fire emergency can save your life and the lives of others.**

1

**The types of fire extinguishers** and which one to use for each type of fire.

2

**The right way to use a fire extinguisher** by using the acronym PASS.

## References

Centers for Medicare and Medicaid Services. (2017, August 9). *Life Safety Code and Health Care Facilities Code (HCFC)*. Retrieved September 20, 2021, from <https://www.cms.gov/Medicare/Provider-Enrollment-and-Certification/GuidanceforLawsAndRegulations/LSC>

Fire Equipment Manufacturers' Association. (n.d.). *Portable Fire Extinguishers*. Retrieved September 20, 2021, from <https://www.femalifesafety.org/types-of-extinguishers.html>

The Joint Commission. (2020). *Life Safety Code*. Retrieved September 20, 2021, from <https://www.jointcommission.org/en/resources/patient-safety-topics/the-physical-environment/life-safety-code-information-and-resources/>

You have reached the end of this module. To exit and return to the Activity Details, select **EXIT**.